



Oxford Gardens, London, W4 3BN

Guide Price £1,195,000

WHITMAN & CO.

SALES · LETTINGS · COMMERCIAL

- Five bedroom family house
- Private south facing garden
- Quiet cul-de-sac
- Through reception room
- Fantastic transport links
- 1,707 sq ft of living space

Tenure - Freehold
Local Authority - Hounslow
Council Tax - Band E

THE PROPERTY

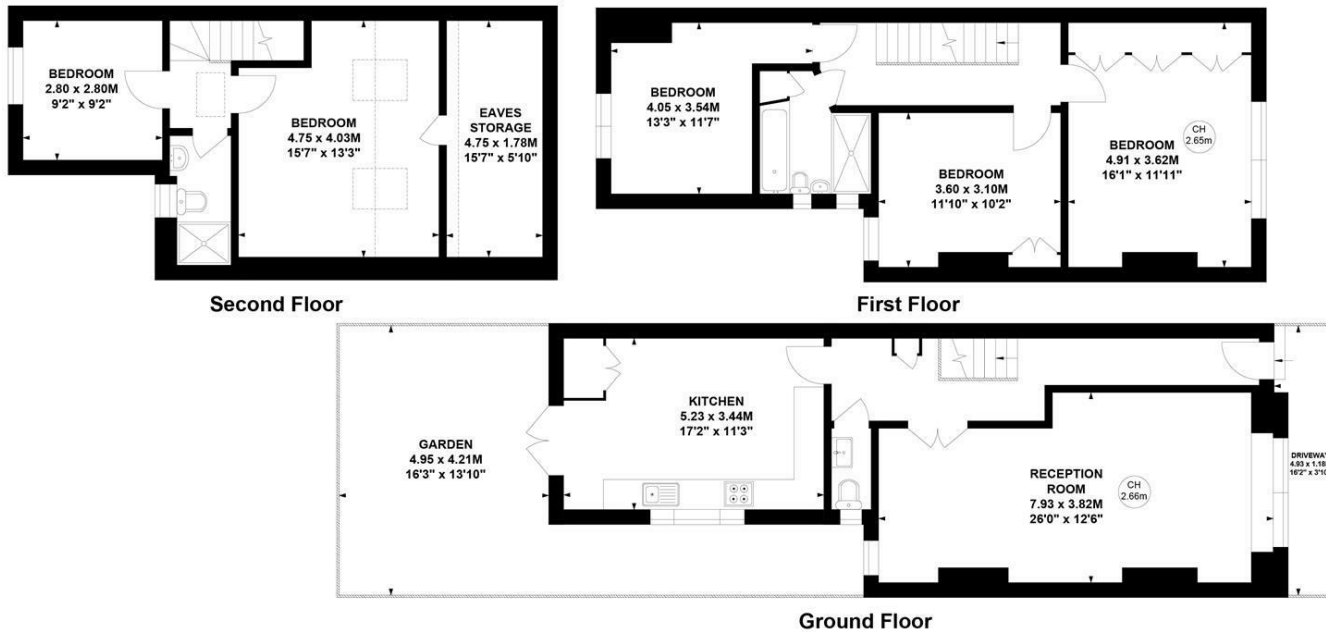
A well-presented five-bedroom period family home, ideally located in a quiet cul-de-sac and offering easy access to a wide range of local amenities. The property features five bedrooms, two bathrooms, spacious 26' through reception rooms, a 17' kitchen/breakfast room, and a guest cloakroom.

Further benefits include a private south-facing garden, perfect for outdoor living. Conveniently positioned close to tube, rail, and bus links, as well as Strand on the Green and the extensive selection of shops, cafés, and restaurants on Chiswick High Road.

Oxford Gardens, W4

Approximate Gross Internal Area
158.58 sq m / 1707 sq ft
(Including Eaves Storage)
Eaves Storage
9.16 sq m / 99 sq ft

Key :
CH - Ceiling Height



Not to scale, for guidance only and must not be relied upon as a statement of fact.
All measurements and areas are approximate only

SITUATION



5-7 Turnham Green Terrace, Chiswick, London, W4 1RG

Tel 020 8747 8800

E-mail sales@whitmanandco.com

Website www.whitmanandco.com

